

Full Year 2022 Unaudited Preliminary Results Presentation

May 2023



**Architects
of tomorrow**

Disclaimer

This presentation has been prepared by IQE plc solely for information purposes and should not be considered to be an offer or solicitation to buy, sell or subscribe for any securities, financial instruments or any rights attaching to such securities or financial instruments.

This presentation may contain forward-looking statements. Forward-looking statements can be identified as anything other than statements of historical fact contained in this presentation and by their nature are subject to uncertainty and risks. These statements are based on current expectations, estimates and projections about the factors that may affect our future performance, including global economic conditions, and the economic conditions of the regions and industries that are major markets for IQE plc.

These expectations, estimates and projections are generally identifiable by statements containing words such as “believes,” “estimates,” “targets,” “plans,” “outlook,” “on track,” “may,” “will,” “could,” “should” or similar expressions.

IQE plc faces risks and uncertainties, many of which are beyond our control, that could cause our actual results to differ materially from any forward-looking information disclosed in this presentation and which could affect our ability to achieve any or all of our stated targets or anticipated transactions.

Important factors that could cause such differences include, but are not limited to:

- business risks relating to macroeconomic and geopolitical matters;
- unanticipated costs, such as those associated with compliance activities;
- market acceptance of new products and services;
- changes in governmental regulations and currency exchange rates; and
- general market conditions.

Although IQE plc believes that the expectations, estimates and projections constituting any forward-looking statement in this presentation are based upon reasonable assumptions, it can give no assurance that those expectations will be achieved.

As forward-looking statements are statements regarding our intent, belief or current expectations, they are not guarantees of future performance. Actual performance and results may differ materially from those described in this presentation. Readers are cautioned not to place undue reliance on these forward-looking statements.

The information contained in this presentation is provided as at the date of presentation and is subject to change without notice. Whilst the presentation has been prepared in good faith, no representation or warranty, express or implied, is given by IQE plc or its representatives as to the accuracy or completeness of the information or opinions in the presentation. IQE plc and its representatives shall have no liability whatsoever, whether under contract, tort, trust or otherwise, to you or any other person resulting from the use of, or reliance on, any information in this presentation. Any dispute, action or other proceeding relating to this presentation shall be adjudicated within the exclusive jurisdiction of the courts of England. All material in this presentation shall be governed by the laws of England and Wales.

Strategic update



Americo Lemos
Chief Executive Officer



**Architects
of tomorrow**

2022 | A year in review

Refreshed
strategy
announced in
Nov-22

- Market-led and aligned to customer demand
- Maintain Connect and Sense markets
- Diversify into Power and Display markets

Business
transformation

- Strengthening of commercial engine
- Closure of Singapore site
- Closure of Pennsylvania site on track by 2024

Customer
engagement

- Move to strategic and long-term customer engagement models

Solid trading
performance
in FY 2022

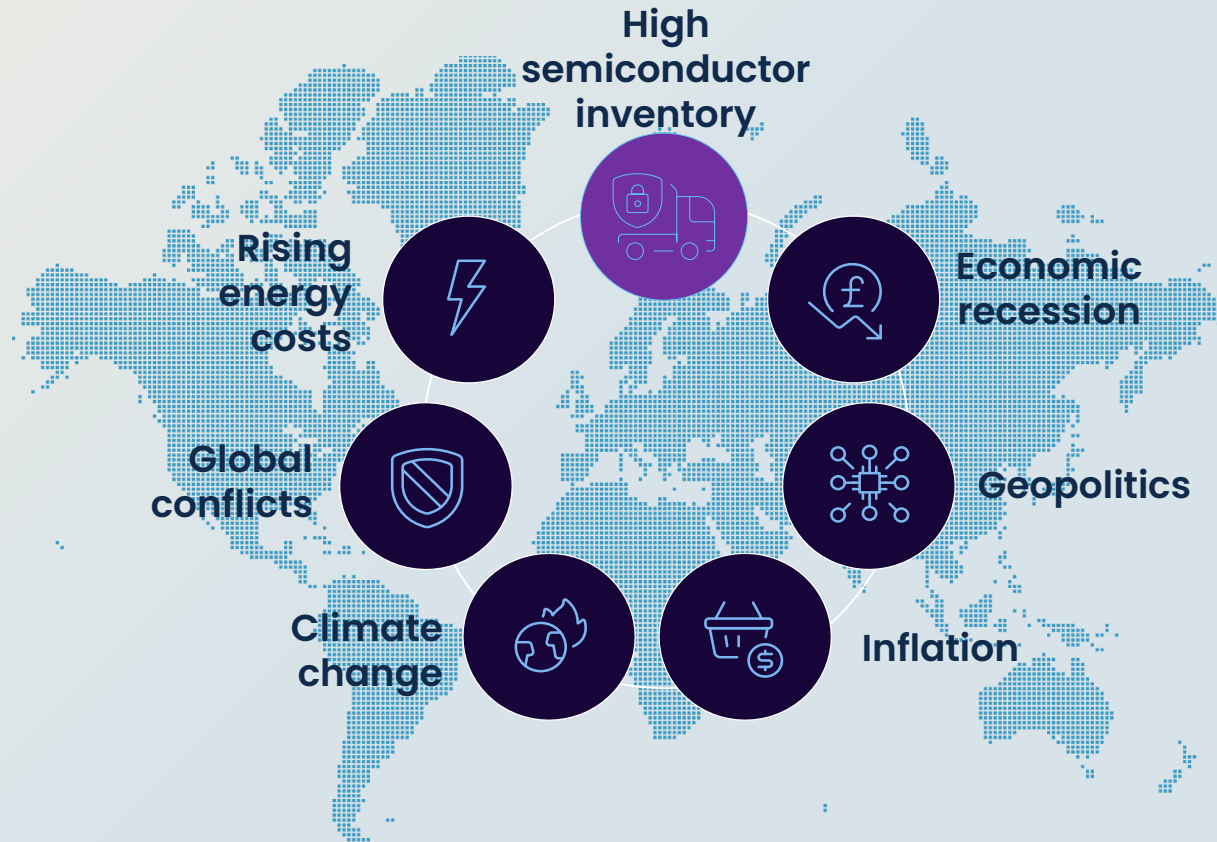
- Delivered a resilient performance despite a challenging macro environment
- Improved margin delivered

**The semiconductor industry
is in a global downturn**

**Short term softness,
demand expected to recover**

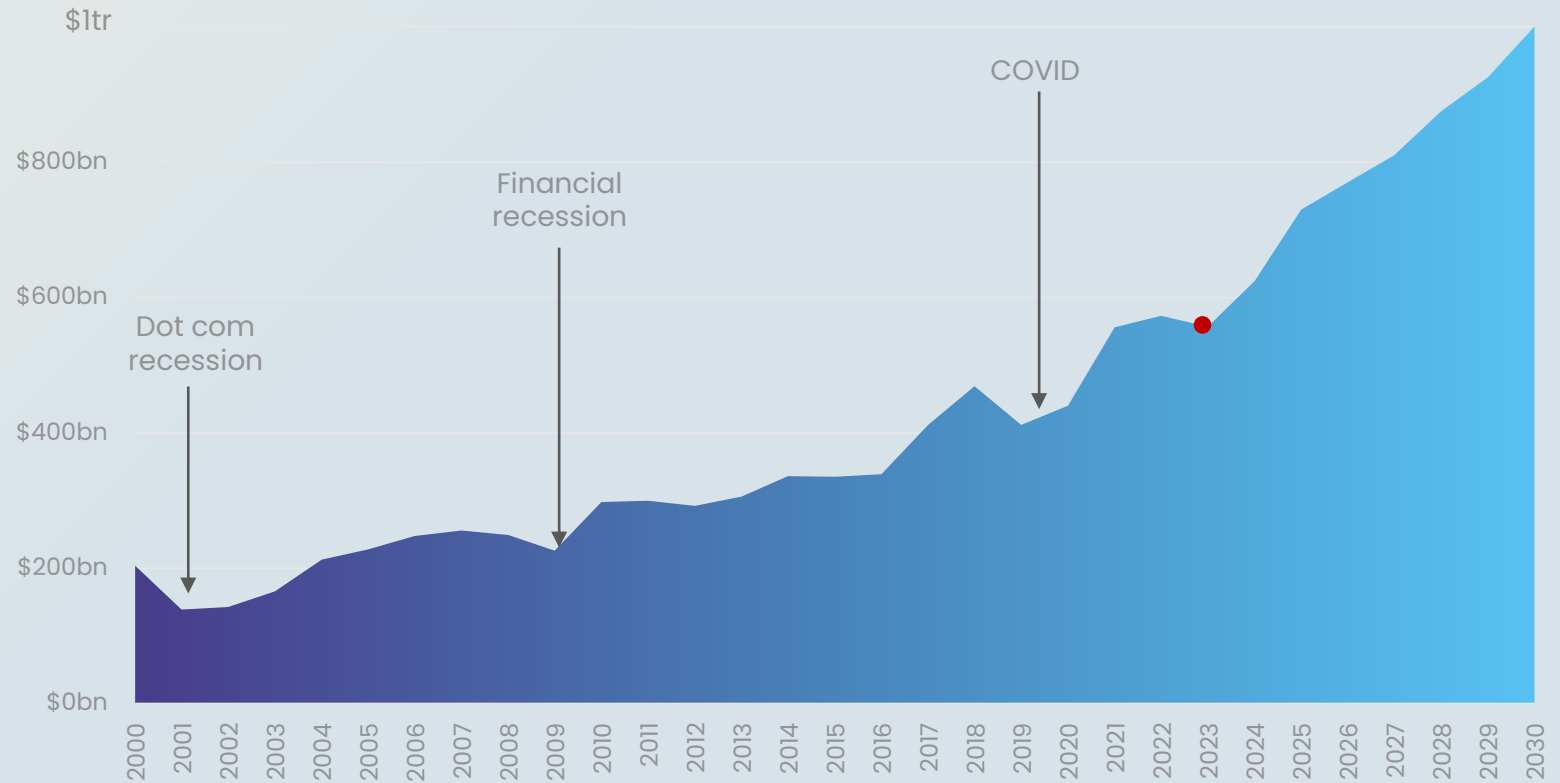
Why is this happening?

Challenging operating environment



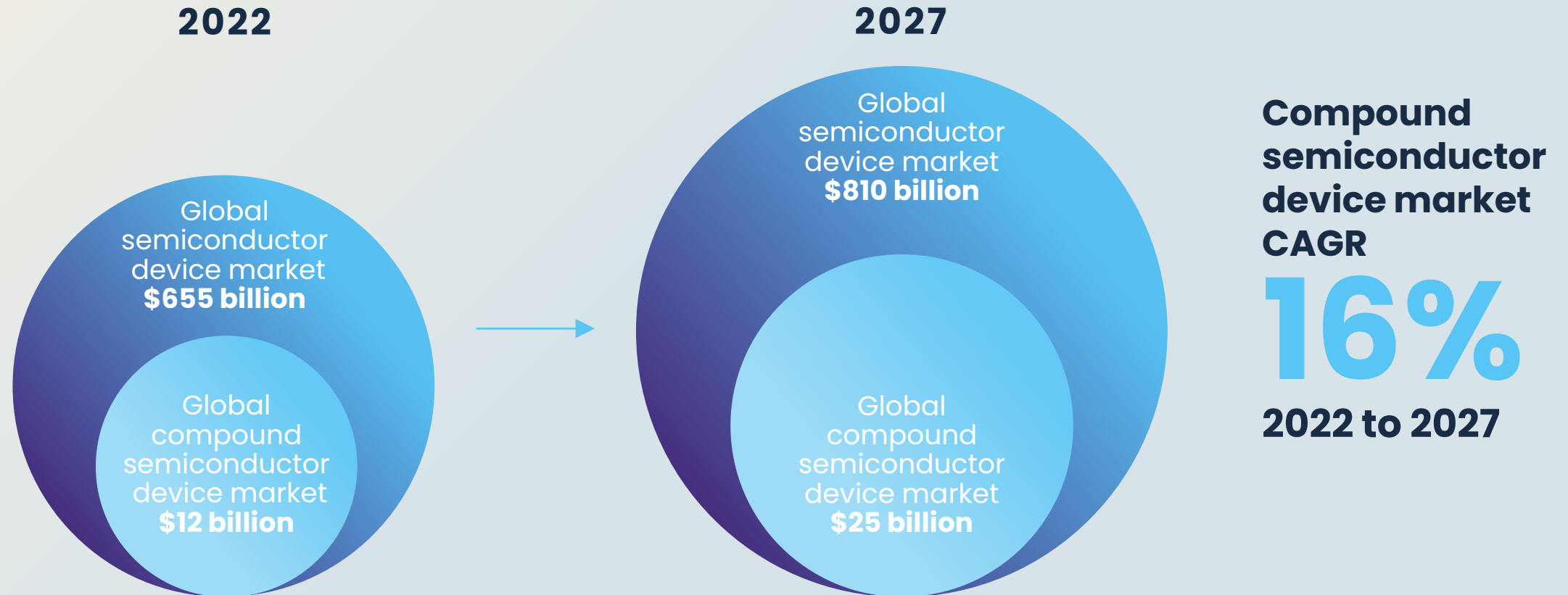
We have the opportunity

The long-term outlook is strong



Source: SIA, McKinsey 2022

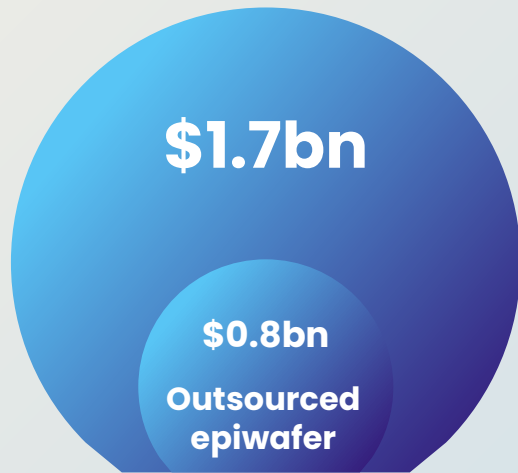
Compound semiconductor device market growth



Source: Yole Intelligence Q4 2022

Our addressable market

The epiwafer market



**Total epiwafer market
in 2022**



**Total epiwafer market
in 2027**

Source: Yole Intelligence Q4 2022, IQE sources

We have the right strategy

Maintain

Diversify



CONNECT



SENSE



POWER



DISPLAY

Successful equity raise

£30m placing to fund:

Liquidity and deleveraging

Near term liquidity requirement

- Additional liquidity required in H2 2023 for working capital purposes and to support growth
- Terms agreed on extension of the RCF with HSBC

Delivering a sustainable balance sheet position going forward

- Sufficient headroom in the event macro headwinds persist through H2 2023

Executing on the strategy

Ensuring the Company can continue to invest to execute on its strategy

- Forecast capex investment of c.£15m p.a. in both FY 2023 and FY 2024
- Disciplined approach balancing cash preservation and maintaining the growth potential of the business

Focusing on the most attractive growth areas and essential maintenance capex

- Growth capex prioritised on already committed acquisition of four new GaN tools (being delivered across 2023 and early 2024) and associated facilitation. Other growth capex will be discretionary upon commercial opportunity

FY 2022 Unaudited Preliminary Financials



Tim Pullen
Chief Financial Officer



**Architects
of tomorrow**

FY 2022 unaudited financial highlights

	FY 22 Reported	FY 22 Adjusted ²	FY 22 Adjusted at constant currency	Comments
Revenue	£167.5m	£167.5m	£151.2m	9% YoY reported growth in line with January Trading Update
Adjusted EBITDA¹	£23.4m	£23.4m	£18.4m	Reported Adj. EBITDA Margin of 14%
EBIT¹	£(73.0)m	£(3.6)m	£(7.3)m	Reported loss contains £63m goodwill impairment resulting from current trading conditions
Operating cashflow	£8.9m	£15.7m	N/A	

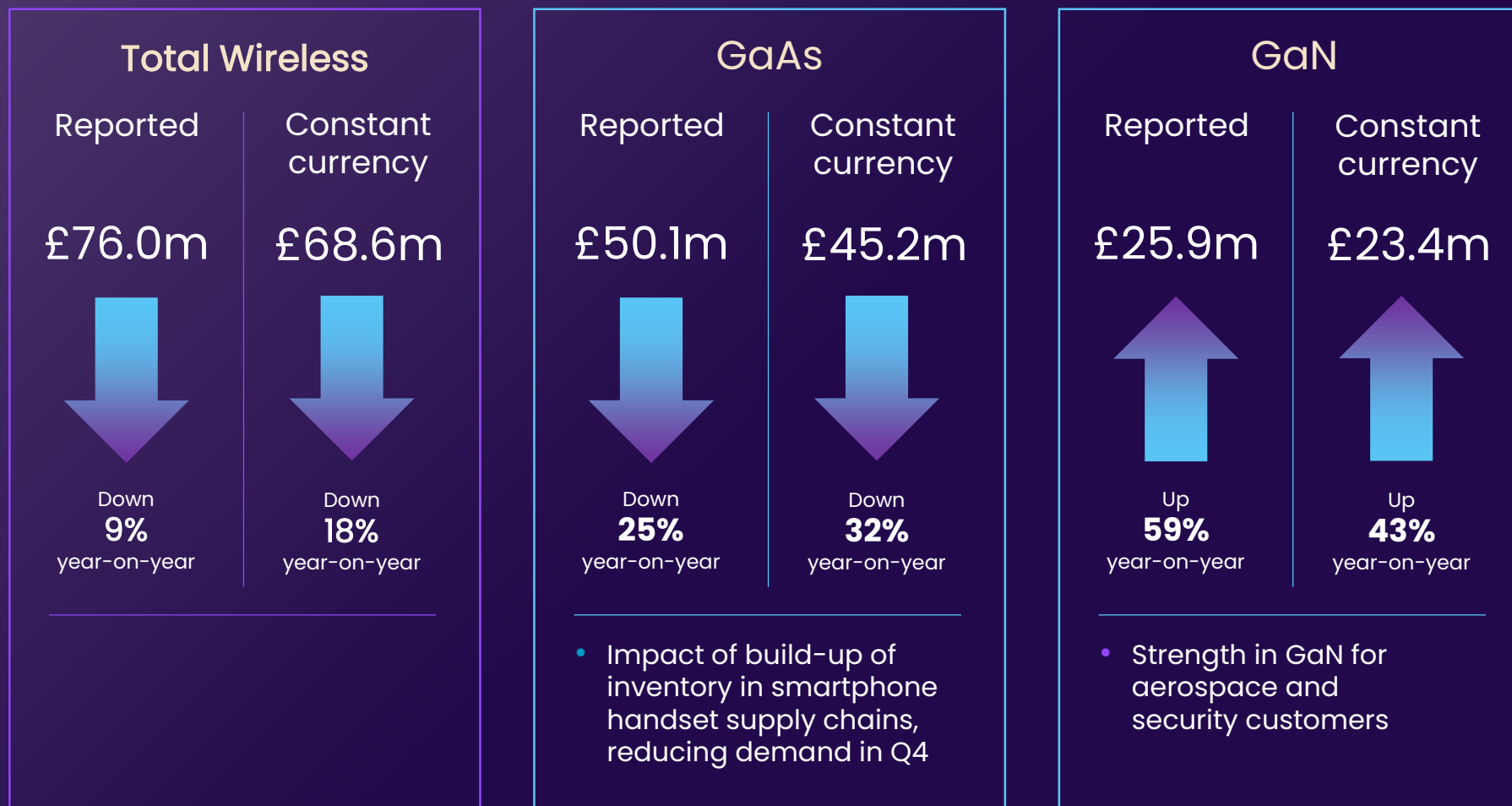


Note: all financials are unaudited

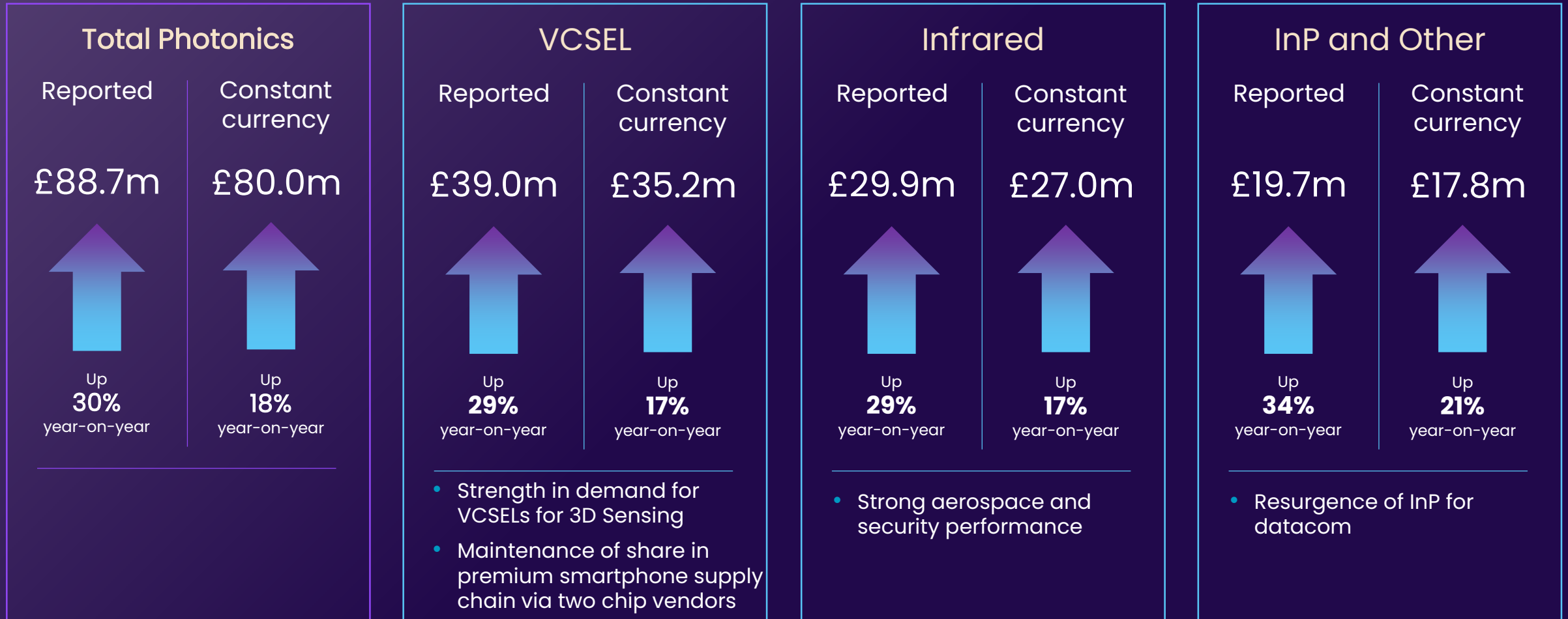
¹Adjusted EBITDA and EBIT are non-IFRS measures, may be calculated differently and therefore not directly comparable to other companies

²Adjustments include impairment of intangible assets, restructuring costs, CEO recruitment costs and share-based payment charges

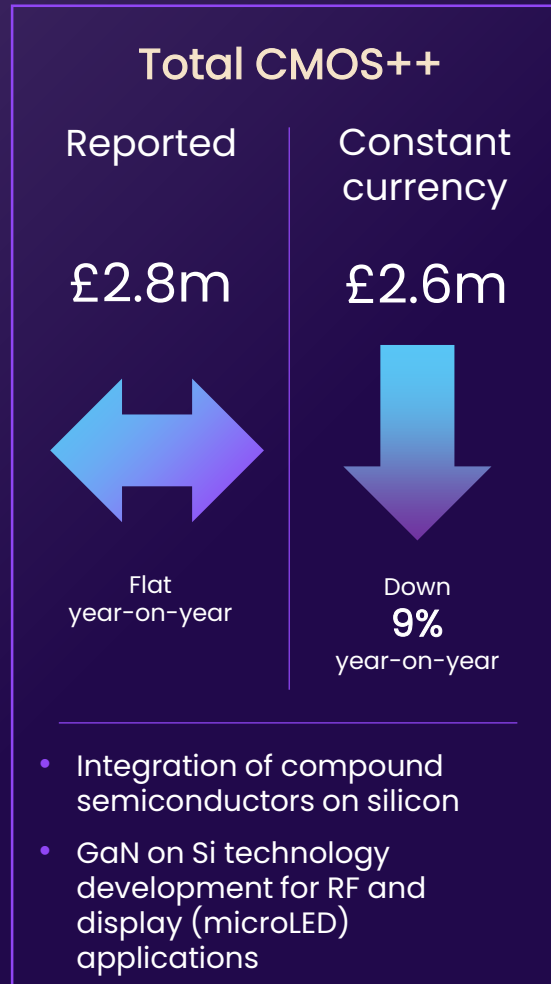
Segmental revenue – Wireless



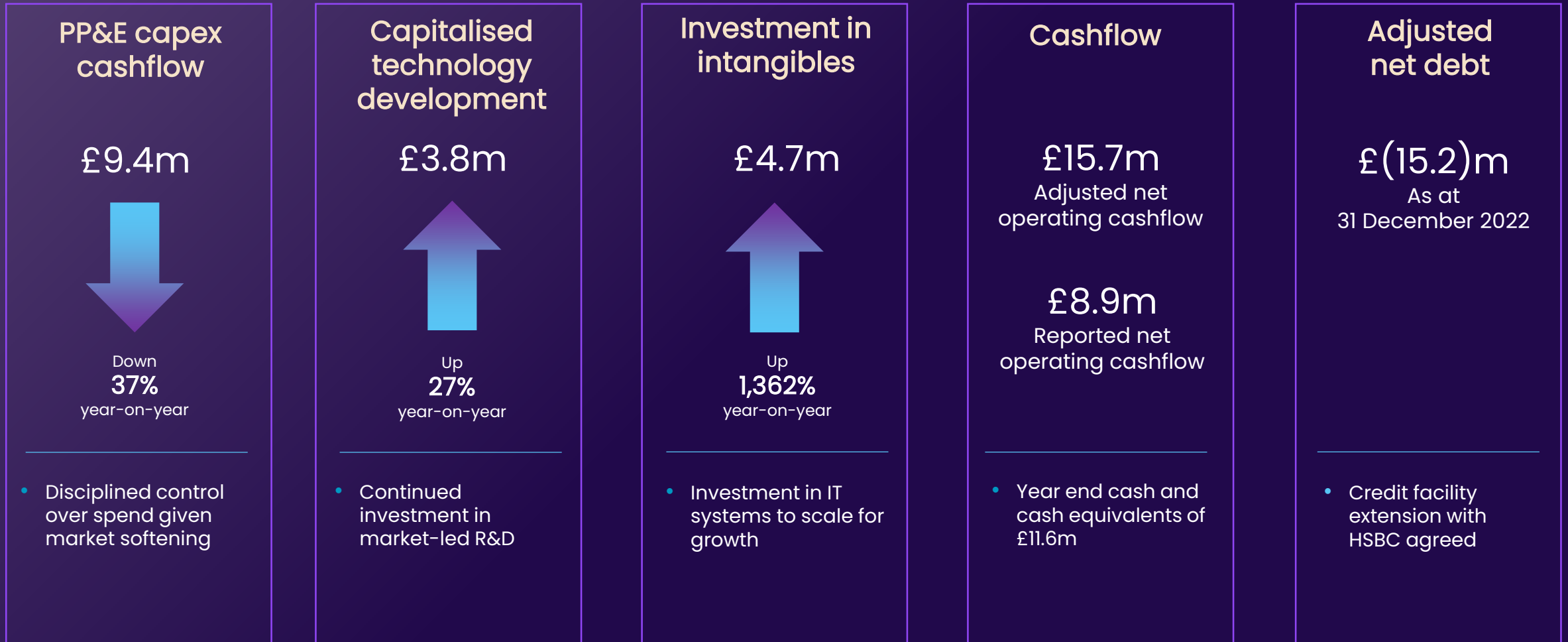
Segmental revenue – Photonics



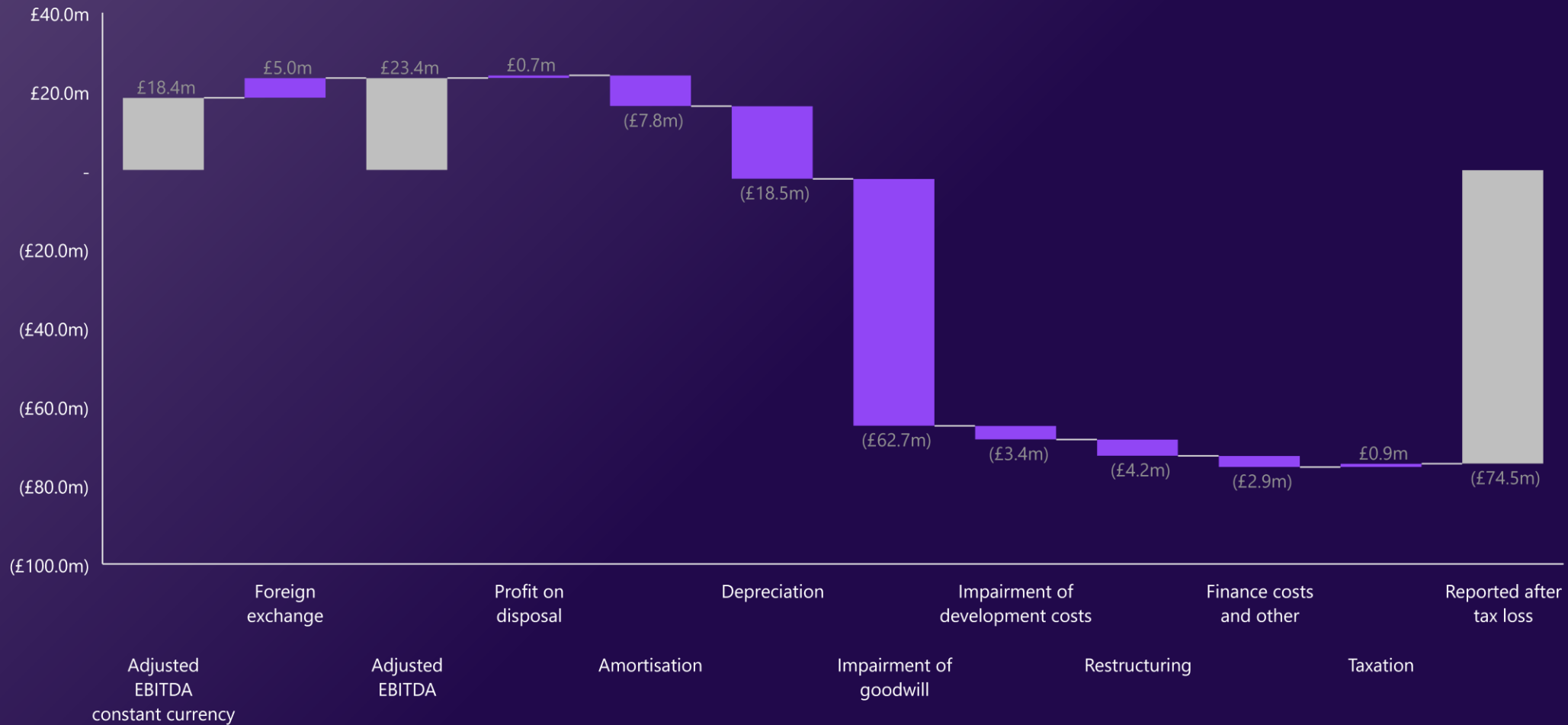
Segmental revenue – CMOS++



FY 2022 capex, cashflow and net debt



EBITDA bridge



Current trading and outlook

Strengthening the balance sheet and positioning IQE for growth

- H1 2023 revenue expected to be in the range of £50–56m due to the industry downturn
- FY23 revenue in line with management expectations set out in March 2023 which include a return to year-on-year growth during the second half of 2023
- Diversification into high-growth markets of power and display, targeting GaN growth opportunities in FY 2024 and beyond

Actions taken to underpin liquidity

Cost control and cash preservation measures

- Total labour costs reduced by 10% in FY 2023¹ while maintaining key skills and manufacturing capability
- Forecast reduction of total overheads by c.7% in FY 2023¹ despite inflationary pressures in several categories
- Reduction in travel costs and discretionary spend
- PPE capex minimised to Health and Safety and maintenance levels
- Re-phasing of IT transformation to preserve cash
- Obsolete tool sales to third parties
- Renegotiation of minimum royalty payments on a contract for which an onerous provision was made in a prior period

Terms agreed with HSBC to renew US\$35m Revolving Credit Facility

- \$35m (c.£28.5m) Revolving Credit Facility extended out by an additional two years to May 2026
- Existing leverage covenant (3x) and interest cover covenant (4x) maintained
- Quarterly covenant testing starting December 2023
- Covenant compliance forecast in base case and downside case forecasts
- Forecast bank interest costs of c.£1.2m in 2023

Equity Capital Raise

- £30m Placing
- Director participation of c.£2.5m out of £30.0m
- Additional up to £3m REX retail offering to existing shareholders in addition to £30.0m

Final remarks

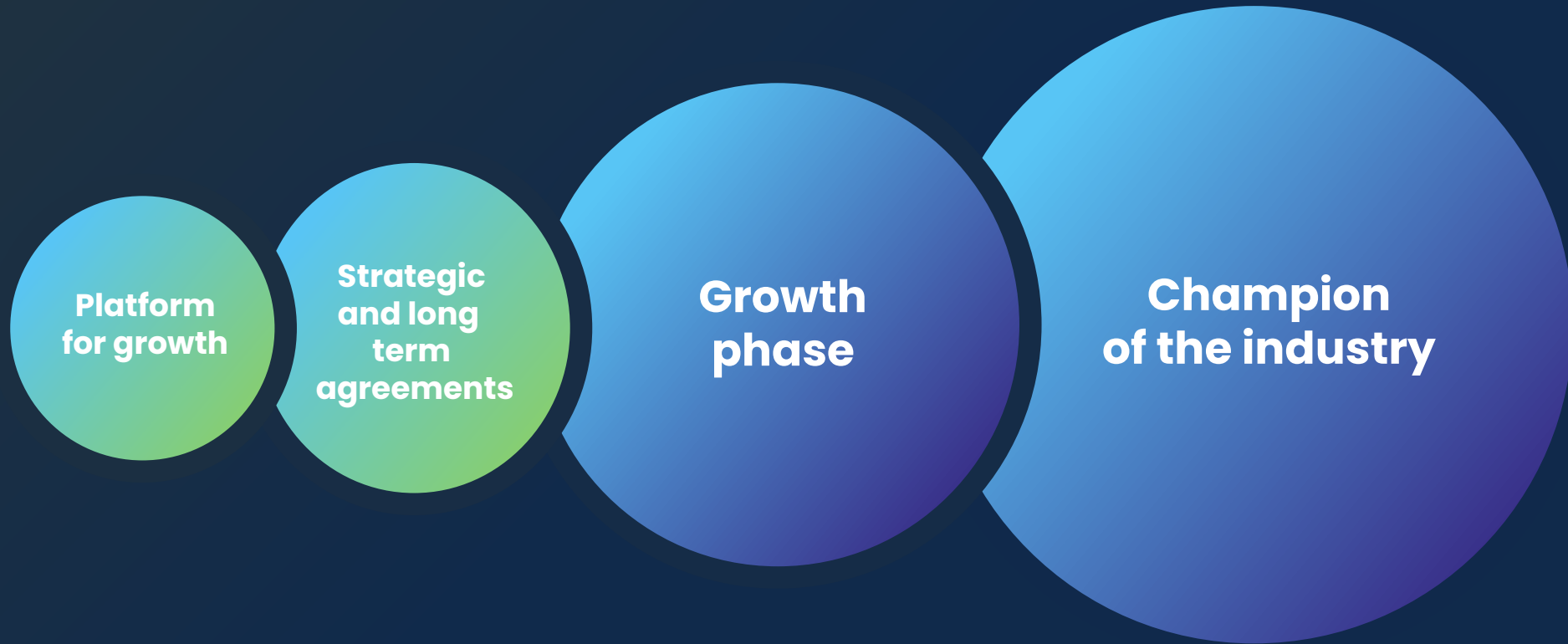


Americo Lemos
Chief Executive Officer



**Architects
of tomorrow**

We have started the journey



IQE

GaN strategy appendix



**Architects
of tomorrow**

GaN-led diversification strategy

- Advanced material essential for power electronic applications with potential for display applications (microLED)
- General lack of suppliers covering all GaN markets
- Compelling business case for establishing outsourced production
- IQE ideally placed to utilise expertise and track record to grow partnerships with key industry players
- IQE already has capabilities in Connect while Power and Display provide long-term opportunity

Maintain

Connect



Communications Infrastructure



Smart Connected Devices



14%

GaN device CAGR

Diversify

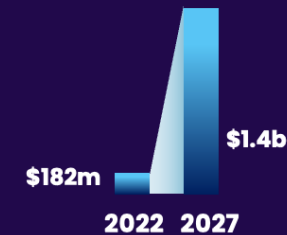
Power



Smart Connected Devices



Automotive & Industrial



50%

GaN device CAGR

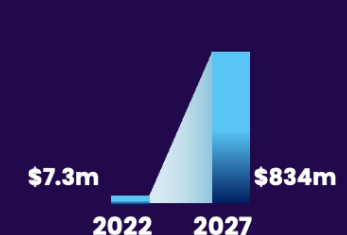
Display



Smart Connected Devices



Automotive & Industrial



158%

GaN device CAGR

GaN is essential in the drive to Net Zero: enabling smaller, more efficient power devices

Prioritising market-led growth opportunities

Refocusing capex budget on GaN to capitalise on significant opportunity

Compelling opportunity to gain scale in power electronics

- Overall forecast capex investment of £15m p.a. in FY23 and FY24 maintained
 - Maintain: Existing PP&E capex minimised
 - Diversify: Growth capex focused on GaN, particularly power electronics
- Total GaN programme commitment staggered over FY23–25 due to preferential terms for delivery and payment
 - Four Aixtron G5+ GaN Reactors ordered plus associated facilities investment
 - Provides capabilities for IQE to meet customer demand to develop and qualify products for the GaN power electronics market

Utilises IQE's existing infrastructure and expertise

- IQE is already an outsourced supplier of GaN epitaxy
- Capacity at our Massachusetts facility to mass produce GaN for US market
- Option to expand both in UK and US to meet the requirements of specific long-term agreements
- Utilises existing epitaxy expertise within the group
- The resultant capability and ability to scale will enable the closure of strategic long-term agreements with multi-year mass production revenues

Strategic investment rationale

- Initial deployment on customer funded R&D programmes
- Each reactor capable of generating strong revenues in mass production
- Incremental margin steps the Group towards the >30% EBITDA margin target set out at CMD
- Accelerates diversification of product and customer portfolio
- Builds the resilience of the Group and reduces customer concentration

Financial results appendix



**Architects
of tomorrow**

Summary financials

£'million	FY 2022 (£'m)	FY 2021 (£'m)
Revenue	167.5	154.1
Sales, general & administrative costs	(31.2)	(30.3)
Impairment loss on intangible assets ¹	(66.2)	(7.4)
Impairment loss on trade receivables and contract assets	(2.3)	-
Adjusted EBITDA ²	23.4	18.7
Adjusted EBIT	(3.6)	(6.5)
Reported EBIT	(73.0)	(20.0)
Reported loss before tax	(75.4)	(22.2)
Reported loss after tax	(74.5)	(31.0)
Adjusted net cashflow from operations	15.7	17.9
Reported net cashflow from operations	8.9	18.9
Capital expenditure ³	(9.4)	(15.1)
Adjusted net debt ⁴	(15.2)	(5.8)
Reported net debt	(66.5)	(60.2)
Cash and cash equivalents	11.6	10.8
Reported Diluted EPS	(9.27p)	(3.87p)
Adjusted Diluted EPS	(0.74p)	(2.41p)

¹ Impairment loss on intangibles includes at least £62m of provisional goodwill impairment subject to external audit

² Adjustments include impairment of intangible assets, restructuring costs, CEO recruitment costs and share-based payment charges.

³ Capex stated is Property, Plant and Equipment cash capex

⁴ Adjusted net debt is calculated as cash less borrowings but excluding lease liabilities and fair value gains/losses on derivative instruments

FY 2022 revenue versus prior year

	FY 22 Reported	FY 21 Reported	FY 22 Adjusted ²	FY 21 Adjusted ²
Revenue	£167.5m	£154.1m	£167.5m	£154.1m
Adjusted EBITDA ¹	£23.4m	£18.7m	£23.4m	£18.7m
EBIT ¹	£(73.0)m	£(20.0)m	£(3.6)m	£(6.5)m
Operating cashflow	£8.9m	£18.9m	£15.7m	£17.9m
Net debt ³	£(66.5)m	£(60.2)m	£(15.2)m	£(5.8)m

Note: all financials are unaudited

¹ Adjusted EBITDA, EBIT and net debt adjustments are non-IFRS measures and may be calculated differently and therefore not directly comparable to other companies;

² Adjusted EBITDA and EBIT adjustments include impairment of intangible assets, restructuring costs, CEO recruitment costs and share-based payment charges.

³ Adjusted net debt is calculated as cash less borrowings but excluding lease liabilities and fair value gains/losses on derivative instruments

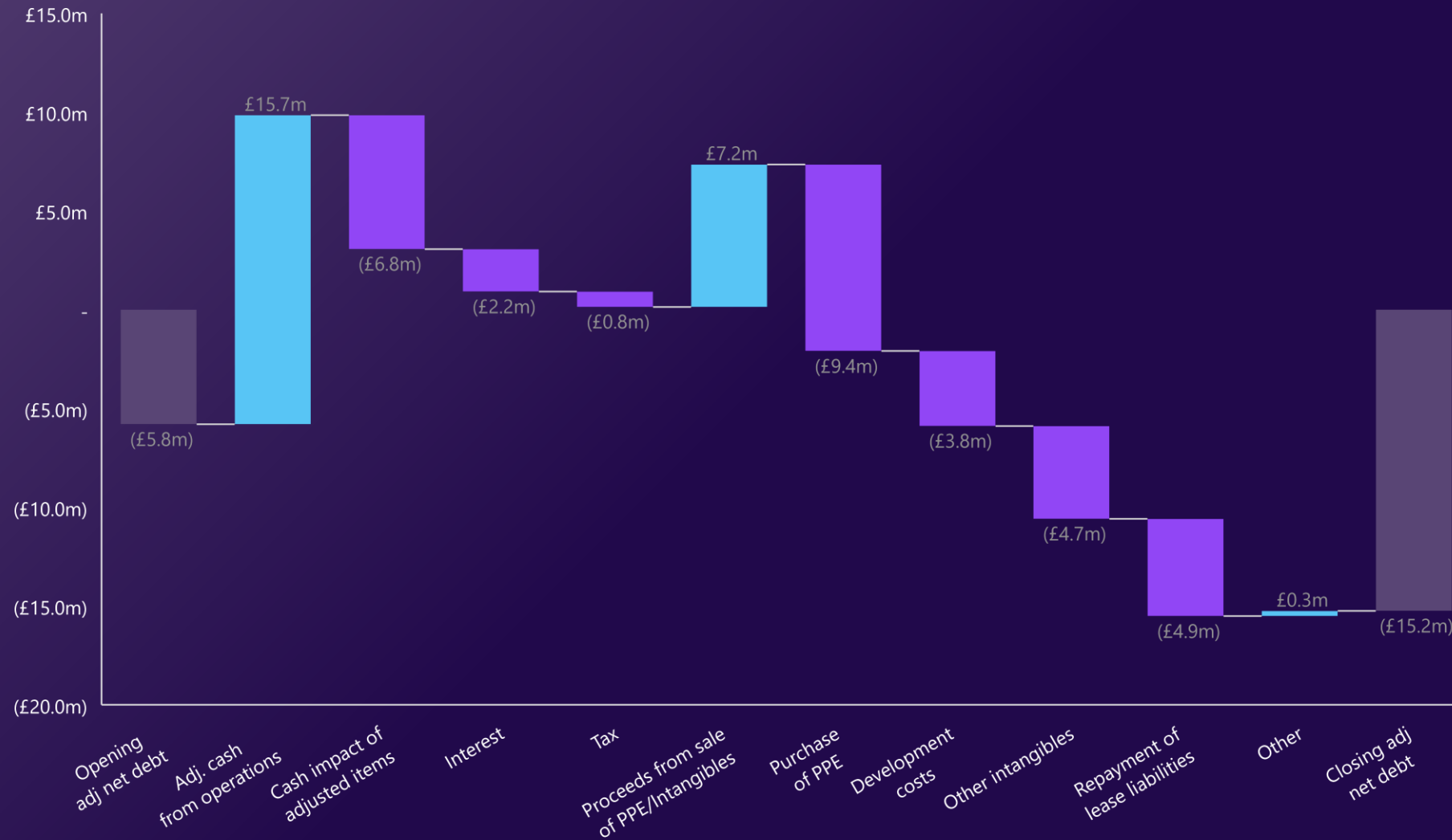
Adjusted income statement items

	2022	2021
Share based payments	£(0.2)m	£(1.7)m
Share based payments – CEO recruitment	£(0.1)m	-
CEO recruitment*	£(0.1)m	£(0.7)m
Impairment – goodwill	£(62.7)m	-
Impairment – other intangibles	£(3.4)m	£(7.4)m
Restructuring*	£(4.2)m	£(3.7)m
Restructuring – profit on disposal of PPE	£1.3m	-



Note: all financials are unaudited
 Items are pre-tax
 Impairment of at least £62m expected (subject to finalisation of audit)
 * Cash items. All other adjustments are non-cash items

Net debt bridge



Balance sheet

As at 31 December 2022

£'million	FY 2022	FY 2021
Intangible assets	37.0	95.9
Property, plant & equipment	127.1	129.7
Right of use assets	41.4	44.3
Deferred tax assets	-	-
Total current assets	90.6	81.4
Current liabilities*	(40.2)	(42.1)
Bank borrowings due within 1 year	(6.2)	(6.2)
Lease liabilities due within 1 year	(4.8)	(4.7)
Total non-current liabilities*	(3.1)	(3.5)
Bank borrowings due after 1 year	(20.6)	(10.4)
Lease liabilities due after 1 year	(46.0)	(49.7)
Net Assets	175.1	234.6

* Excludes bank borrowings and lease liabilities highlighted separately

IQE